

# SONY

4-199-738-13(1)

# Personal Audio Docking System

## Operating Instructions

XDR-DS12iP

**DAB DAB+**



No Power No Problem is a trademark of Sony Corporation.

©2010 Sony Corporation

Printed in China

http://www.sony.net/

### WARNING

**To reduce the risk of fire or electric shock, do not expose this apparatus to rain or moisture.**

To reduce the risk of fire, do not cover the ventilation of the apparatus with newspapers, tablecloths, curtains, etc. And do not place lighted candles on the apparatus. To reduce the risk of fire or electric shock, do not expose this apparatus to dripping or splashing, and do not place objects filled with liquids, such as vases, on the apparatus.

Do not install the appliance in a confined space, such as a bookcase or built-in cabinet.

Do not expose the batteries (battery pack or batteries installed) to excessive heat such as sunshine, fire or the like for a long time.

As the main plug is used to disconnect the unit from the mains, connect the unit to an easily accessible AC outlet. Should you notice an abnormality in the unit, disconnect the main plug from the AC outlet immediately.

The unit is not disconnected from the AC power source (mains) as long as it is connected to the wall outlet, even if the unit itself has been turned off.

The nameplate and important information concerning safety are located on the bottom exterior.

### CAUTION

Danger of explosion if battery is incorrectly replaced. Replace only with the same type.

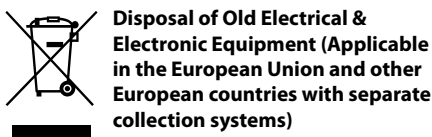
**Notice for customers: the following information is only applicable to equipment sold in countries applying EU directives** The manufacturer of this product is Sony Corporation, 1-7-1 Konan, Minato-ku, Tokyo, 108-0075 Japan. The Authorized Representative for EMC and product safety is Sony Deutschland GmbH, Hedelfinger Strasse 61, 70327 Stuttgart, Germany. For any service or guarantee matters, please refer to the addresses given in separate service or guarantee documents.

## Precautions

- Operate the unit on the power source specified in "Specifications."
- Since a strong magnet is used for the speaker, keep personal credit cards using magnetic coding or spring-wound watches away from the unit to prevent possible damage from the magnet.
- Do not leave the unit in a location near a heat source such as a radiator or airtid, or in a place subject to direct sunlight, excessive dust, mechanical vibration, or shock.
- Allow adequate air circulation to prevent internal heat build-up. Do not place the unit on a surface (a rug, a blanket, etc.) or near materials (a curtain) which might block the ventilation holes.
- Should any solid object or liquid fall into the unit, unplug the unit and have it checked by qualified personnel before operating it any further.
- To clean the casing, use a soft cloth dampened with a mild detergent solution.
- Never touch the wire of the external aerial during a thunderstorm. Furthermore, immediately disconnect the AC power cord from the radio.

### NOTES ON LITHIUM BATTERY

- Wipe the battery with a dry cloth to assure a good contact.
- Be sure to observe the correct polarity when installing the battery.
- Do not hold the battery with metallic tweezers, otherwise a short-circuit may occur.



This symbol on the product or on its packaging indicates that this product shall not be treated as household waste. Instead it shall be handed over to the applicable collection point for the recycling of electrical and electronic equipment. By ensuring this product is disposed of correctly, you will help prevent potential negative consequences for the environment and human health, which could otherwise be caused by inappropriate waste handling of this product. The recycling of materials will help to conserve natural resources. For more detailed information about recycling of this product, please contact your local Civic Office, your household waste disposal service or the shop where you purchased the product. Applicable accessory: Remote Commander.



This symbol on the battery or on the packaging indicates that the battery provided with this product shall not be treated as household waste. On certain batteries this symbol might be used in combination with a chemical symbol. The chemical symbols for mercury (Hg) or lead (Pb) are added if the battery contains more than 0.0005% mercury or 0.004% lead. By ensuring these batteries are disposed of correctly, you will help prevent potentially negative consequences for the environment and human health which could otherwise be caused by inappropriate waste handling of the battery. The recycling of the materials will help to conserve natural resources.

In case of products that for safety, performance or data integrity reasons require a permanent connection with an incorporated battery, this battery should be replaced by qualified service staff only. To ensure that the battery will be treated properly, hand over the product at end-of-life to the applicable collection point for the recycling of electrical and electronic equipment.

For all other batteries, please view the section on how to remove the battery from the product safely. Hand the battery over to the applicable collection point for the recycling of waste batteries.

For more detailed information about recycling of this product or battery, please contact your local Civic Office, your household waste disposal service or the shop where you purchased the product.

If you have any questions or problems concerning your unit, please consult your nearest Sony dealer.

## Features

- DAB/DAB+/FM Tuner
- Wake or Sleep to iPod/Radio
- MEGA BASS/MEGA Xpand
- Dual Alarm (A/B)
- Brightness control (High/Middle/Low/OFF)
- Wireless Remote Commander
- No Power No Problem alarm system to keep the clock and the alarm operating during a power interruption with a CR2032 battery installed.

## Specifications

**Time display**  
Switching between 12-hour system (default) and 24-hour system

**Section for iPod**  
DC out: 5V  
MAX: 500mA

**Radio section**  
**Frequency range**

Band	Frequency	Channel step
DAB	174.928 MHz -	
(Band-III)	239.200 MHz	
FM	87.5 MHz -	0.05 MHz
	108 MHz	

### DAB (Band-III) frequency table (MHz)

No.	Channel	Frequency
1	5A	174.928
2	5B	176.640
3	5C	178.352
4	5D	180.064
5	6A	181.936
6	6B	183.648
7	6C	185.360
8	6D	187.072
9	7A	188.928
10	7B	190.640
11	7C	192.352
12	7D	194.064
13	8A	195.936
14	8B	197.648
15	8C	199.360
16	8D	201.072
17	9A	202.928

No.	Channel	Frequency
18	9B	204.640
19	9C	206.352
20	9D	208.064
21	10A	209.936
22	10B	211.648
23	10C	213.360
24	10D	215.072
25	11A	216.928
26	11B	218.640
27	11C	220.352
28	11D	222.064
29	12A	223.936
30	12B	225.648
31	12C	227.360
32	12D	229.072
33	13A	230.784
34	13B	232.496
35	13C	234.208
36	13D	235.920
37	13E	237.488
38	13F	239.200

### General

#### Speaker

Approx. 5.7 cm (2 1/4 inches) dia. 6 Ω

#### Input

AUDIO IN jack (ø 3.5 mm stereo minijack)

#### Power output

3.5 W + 3.5 W (at 10% harmonic distortion)

#### Power requirements

230 V AC, 50 Hz

For clock back up: 3V DC, CR2032 battery (1)

#### Dimensions

Approx. 290.5 mm x 152.0 mm x 139.5 mm (w/h/d)

(11 3/4 inches x 5 13/16 inches x 5 1/2 inches) including projecting parts and controls

#### Mass

Approx. 1.7 kg (3 lb 12 oz) including power supply unit

#### Supplied accessories

Remote commander (1)

Audio connecting cable (1)

Universal Dock Adapter for iPhone (1)

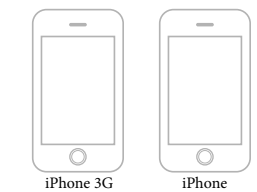
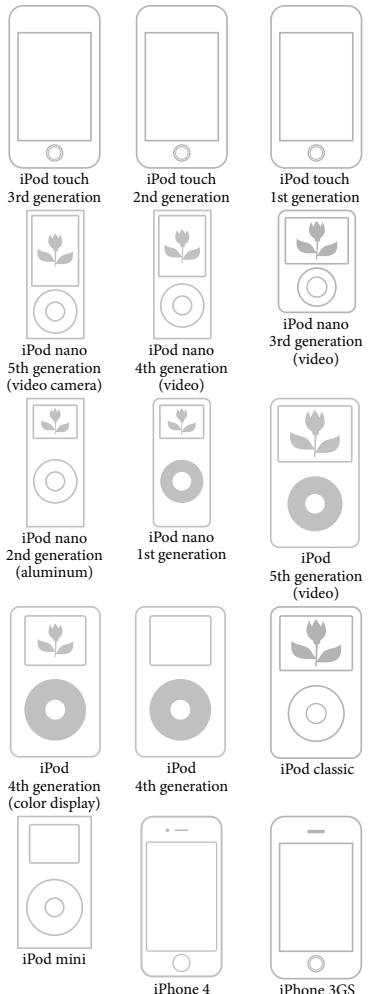
Universal Dock Adapter for iPhone 3G & iPhone 3GS (1)

Universal Dock Adapter for iPhone 4

Design and specifications are subject to change without notice.

## Compatible iPod/iPhone models

Compatible iPod/iPhone models are as follows. Update your iPod/iPhone to use the latest software before you use it.



### Notes

- In these Operating Instructions, "iPod" is used as a general reference to functions of iPod on an iPod or iPhone, unless otherwise specified by the text or illustrations.
- The connector of the unit is for sole use with an iPod. If you use devices that do not match with the connector, connect to the **AUDIO IN** jack of this unit with the supplied audio connecting cable.
- Sony cannot accept responsibility in the event that data recorded to an iPod is lost or damaged when using an iPod connected to this unit.

## Troubleshooting

Should any problem persist after you have made the following checks, consult your nearest Sony dealer.

### The clock flashes "AM 12:00" or "0:00" due to a power interruption.

- The battery is low. Replace the battery. Remove the old battery and install a new one.
- Make sure to remove the insulation film of the backup battery before use.

### The alarm of radio, iPod or buzzer does not sound at the preset alarm time.

- Check that alarm "A" or alarm "B" is properly displayed.

### The alarm of radio or iPod is activated but no sound comes on at the preset alarm time.

- Check the alarm volume setting.

### There is no sound from the iPod.

- Make sure the iPod is securely connected.
- Adjust the **VOLUME**.

### The iPod cannot be operated with this unit.

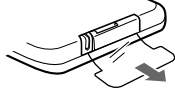
- Make sure the iPod is securely connected.

### The iPod cannot be charged.

- Make sure the iPod is securely connected.

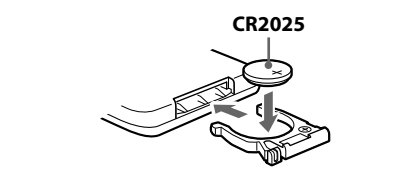
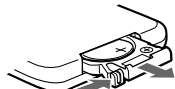
## Preparing the remote commander

Before using the remote commander for the first time, remove the insulation film.



## To know when to replace the battery

With normal use, the battery (CR2025) should last for about six months. When the remote commander no longer operates the unit, replace the battery with a new one.



### Notes

- Do not attempt to charge the battery.
- If you are not going to use the remote commander for a long time, remove the battery to avoid any damage that may be caused by leakage and corrosion.

## About the backup battery

To keep accurate time, this unit contains a CR2032 battery as a backup power source. The battery keeps the clock and the alarm operating in the event of a power interruption.

## To know when to replace the battery

When the battery becomes weak, "ex" appears in the display.

If a power interruption occurs while the battery is weak, the current time and alarm settings will be erased.

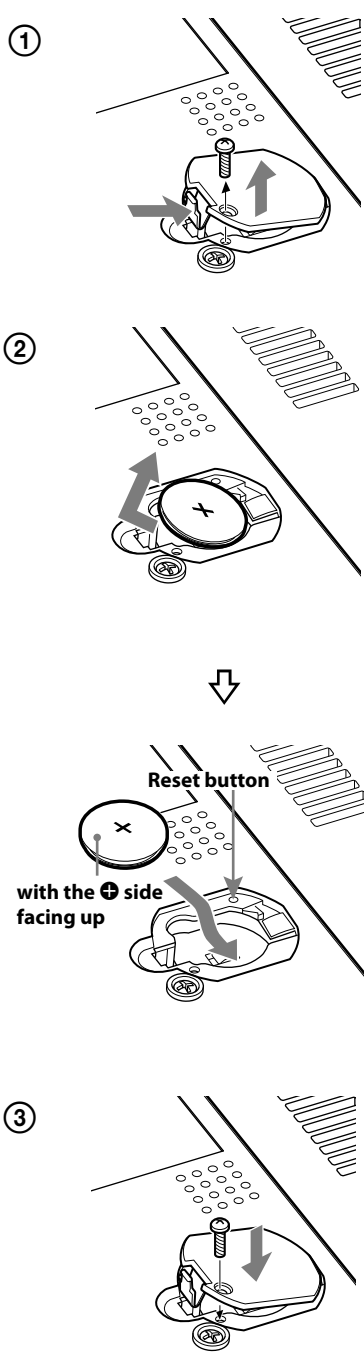
Replace the battery with a Sony CR2032 lithium battery. Use of another battery may cause a fire or explosion.

## To replace the battery

- Keep the AC plug connected to the AC outlet, remove the screw that secures the battery compartment lid at the bottom of the unit using a screwdriver, and open the lid (see Fig. ①).
- Remove the old battery and insert a new one in the battery compartment with the side facing up (see Fig. ②).
- Replace the battery compartment lid and secure it with the screw (see Fig. ③).
- Press **iPod & iPhone** **▶||**, **DAB/FM**, **AUDIO IN** or **SNOOZE/DATE/SLEEP OFF** to turn "ex" off in the display.

### Note

- Do not disconnect the plug from the AC outlet, when you replace the battery. Otherwise, the calendar, current time, alarm settings and station presets will be erased.



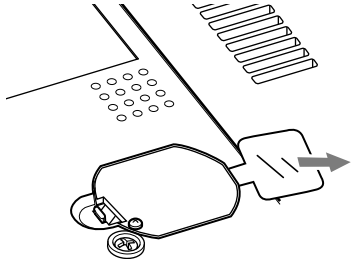
## If the time in the display is incorrect after the battery is changed (Reset)

Press the reset button with a pointed device. The reset button is in the small hole located in the battery compartment (see Fig. ②).

## Setting the clock for the first time

When the first time after purchase, do the following.

## 1 Remove the insulation film of the backup battery at the bottom of the unit.



## 2 Extend the wire aerial fully.

**3 Plug in the unit.** "AM 12:00" and "FRI 01-01-2010" flash for about 2 seconds, then "Scanning..." appears in the display. The unit will automatically scan and create a list of receivable DAB broadcasts. The services are stored in the list in alphabetical order.



When scanning is finished, the unit gets the time from the DAB data of the first station received. The current time appears in the display.

### Notes

- If no broadcasts are found by the DAB scan, "NO STATION FOUND" appears for about 2 seconds, then "AM 12:00" flashes in the display. The clock cannot be set. In this case, set the clock manually (see "Setting the clock manually").
- If the system clock is already running (has been set manually or synchronized from DAB before), the system will not try to enter the DAB function automatically when powering on the unit.
- The clock time cannot be set via DAB data if it is within an hour ahead or behind the start or end of daylight saving time (summer time). In this case, power on the unit at another time setting, or set the clock manually (see "Setting the clock manually").

## When daylight saving time (summer time) begins

This model automatically adjusts for daylight saving time (summer time). "※" is displayed from the beginning of daylight saving time (summer time) and disappears at the end of the daylight saving time (summer time) automatically.

The daylight saving time (summer time) adjustment is based on GMT (Greenwich Mean Time).

### Tips

- Daylight saving time (summer time) begins at 1:00 AM on the final Sunday of March.
- Standard time begins at 2:00 AM on the final Sunday of October.

## To cancel Auto DST/summer time adjustment during the daylight saving time (summer time) period

The Auto DST/summer time adjustment can be canceled. Press **MENU** and **SELECT** • or • to select the "Auto DST", and then press **ENTER**. Press **SELECT** • or • to select "OFF" and then press **ENTER** again. The "※" mark disappears from the display. The time returns to standard time.

## To activate Auto DST/summer time adjustment again

Press **MENU** and **SELECT** • or • to select the "Auto DST", and then press **ENTER**. Press **SELECT** • or • to select "ON", and then press **ENTER** again. The "※" mark appears in the display. The time returns to summer time.

## Setting the clock manually

Do the following if DAB broadcast is not available (depending on area). The time setting mode by DAB becomes invalid.

- Plug in the unit.
- Press **MENU** and **SELECT** • or • to select "Date & Time," and then press **ENTER**. The year flashes in the display.
- Press **SELECT** • or • to set the year, and then press **ENTER**.
- Repeat step 3 to set the month, day, hour and minute. The seconds start incrementing from zero.

### Notes

- The clock setting is available in clock state only. (When using radio, iPod or AUDIO IN, press **OFF** to set the clock.)
- If you do not press any button for about 1 minute while setting the clock, the clock setting will be canceled.
- A 100-year calendar (2010 - 2109) is installed in the unit. When the date is set, the day of the week is automatically displayed. MON = Monday, TUE = Tuesday, WED = Wednesday, THU = Thursday, FRI = Friday, SAT = Saturday, SUN = Sunday

### To change the time format

You can choose a time format between 12-hour system (default) and 24-hour system.

- Press **MENU** and **SELECT** • or • to select "Time Format," and then press **ENTER**.
- Press **SELECT** • or • to select the desired time format, and then press **ENTER**. The time format toggles between 12-hour system ("AM 12:00" = midnight) and 24-hour system ("0:00" = midnight).

### To change the date format

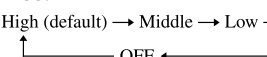
- Press **MENU** and **SELECT** • or • to select "Date Format," and then press **ENTER**.
- Press **SELECT** • or • to select the desired date format, and then press **ENTER**.

## To display the year and date when using radio

Press **SNOOZE/DATE/SLEEP OFF** (SNOOZE on the remote). After a few seconds, the display will change back to the current service or station automatically.

## Setting the brightness of the display

Four levels of brightness are available by pressing **BRIGHTNESS**.



Even if brightness level is set to OFF, it will change to Middle while the alarm is sounding.

## Improving the reception

### DAB Band-III/FM

Extend the wire aerial fully to increase reception sensitivity. Keep the wire aerial away from AC power cord. Do not bundle the wire aerial and AC power cord together. For DAB reception, press **DISPLAY** to show the signal strength in order to rotate the aerial for optimum reception.

### Notes on radio reception

- Keep digital music players or mobile phones away from the aerial, as this may lead to reception interference.
- When you are listening to the radio with an iPhone connected to the unit, interference with radio reception may occur.
- When you are listening to the radio while charging an iPod, interference with radio reception may occur.

### Tip

If an FM broadcast is noisy, press **MENU** and **SELECT** • or • to select "Mode," and then press **ENTER**. Press **SELECT** • or • to select "Mono," and then press **ENTER** again. "MONO" appears in the display and the radio will play in monoaural and the sound will become clearer.

## Operating the radio

The unit can receive DAB service and FM stations.

- Press **DAB/FM** repeatedly to select the desired band. Each press changes the band as follows:
- Press **MENU** and **SELECT** • or • to select "Auto Preset," and then press **ENTER**.
- Press **SELECT** • or • to select "Yes," and then press **ENTER**. The unit automatically presets the available channels for both FM1 and FM2 in order.

### Tip

To stop auto preset tuning, press **OFF**.

- Press **TUNING** + or - (TUNE + or - on the remote) to turn to the desired service or station. If a selected DAB service has finished broadcasting, sound stops and "NO SERVICE" appears. In this case, press **TUNING** + or - (TUNE + or - on the remote) to select another service.
- Adjust volume using **VOLUME** + or - (VOL + or - on the remote). To turn off the radio, press **OFF**.

### Note

**MENU** and **TUNING** + or - are not available when "Tuning..." is displayed.

### Note on FM usage

The frequency step is set to 0.05 MHz on FM.

### Note on DAB usage

"NO SERVICE" appears when the selected service cannot be received.

### About the SC (Secondary Component)

If the selected primary component has a secondary component, "SC" flashes in the display. Press **TUNING** + or - (TUNE + or - on the remote) to receive the desired secondary component. "SC" lights up while the secondary component is being received.

### Note

When the selected secondary component is finished, the unit returns automatically to the primary component.

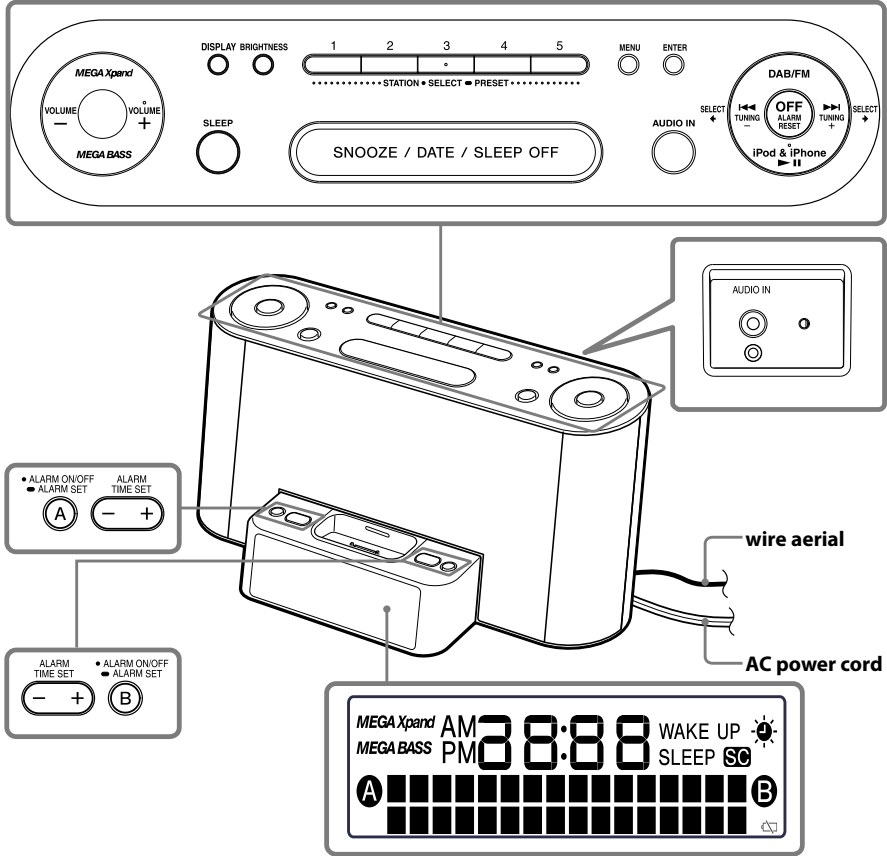
## Presetting your favourite services or stations

You can preset up to 10 services in DAB (5 services in DAB1, 5 services in DAB2) and 10 stations in FM (5 stations in FM1, 5 stations in FM2).

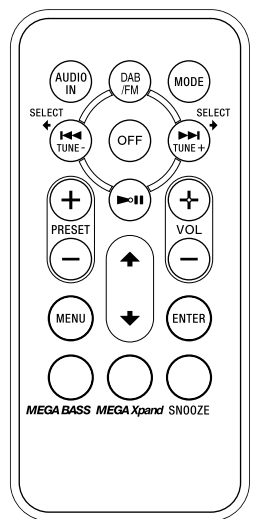
### Presetting services or stations

- Follow **steps 1** to **2** in "Operating the radio" and manually tune in to the station you want to preset.
- Press and hold the favourite **STATION** • **SELECT** = **PRESET** 1 to 5 button on the unit. "PRESET" and the number flash for about 2 seconds in the display, then change to fully lit. The service or station is stored.

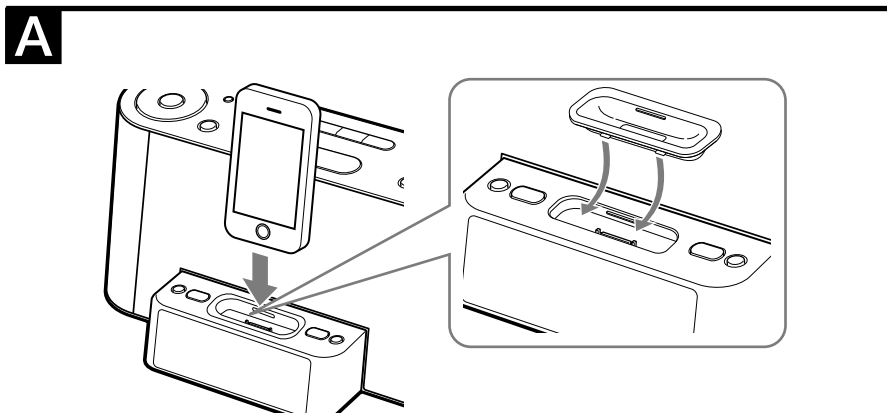




The **STATION • SELECT • PRESET 3**, **VOLUME +** and **iPod & iPhone ►||** buttons have a tactile dot.



The **►||** and **VOL +** buttons have a tactile dot.



## Scan Tuning (FM only)

The unit automatically scans FM stations.

- Press **DAB/FM** repeatedly to select the FM band.
- Press and hold **TUNING +** or **- (TUNE +** or **-** on the remote).
  - +**: scans upward through the frequency bands.
  - : scans downwards through the frequency bands.
 Scanning starts from the currently-tuned frequency. When a station is received, scanning stops.
- Adjust the volume using **VOLUME +** or **- (VOL +** or **-** on the remote).

## Operating an iPod

You can enjoy audio from iPod by connecting to this unit. To use an iPod, refer to the user's guide of your iPod.

If you are using an iPhone, iPhone 3G, iPhone 3GS or iPhone 4, attach the supplied universal dock adapter for iPhone, iPhone 3G, iPhone 3GS or iPhone 4 before connecting. The adapter number, or , is shown on the underside of the supplied universal dock adapters. is for the iPhone, is for the iPhone 3G & iPhone 3GS and is for the iPhone 4. Check the adapter number before use.

### Universal Dock Adapter



### Notes

- When inserting an iPod into the unit, be sure to use the universal dock adapter supplied with your iPod or commercially available from Apple Inc.

- The connector of the unit is exclusively for use with an iPod. If you use a device that does not match the connector, connect it to the **AUDIO IN** jack of this unit with the supplied audio connecting cable.
- Sony cannot accept responsibility in the event that data recorded on an iPod is lost or damaged when using an iPod connected to this unit.
- For details of environmental conditions for operating your iPod, check the website of Apple Inc.

- Attach the adapter for your iPod/iPhone, and then insert your iPod/iPhone into the connector of the unit (see Fig. **A**).
- Press **iPod & iPhone ►||**. The iPod begins to play automatically. You can operate the connected iPod by this unit or the buttons on iPod.
- Adjust the volume using **VOLUME +** or **- (VOL +** or **-** on the remote).

To	Press
Turn off the iPod	<b>OFF</b> , or press and hold <b>iPod &amp; iPhone ►  </b>
Pause playback	<b>iPod &amp; iPhone ►  </b> To resume play, press it again.
Go to the next track	<b>►  </b> (forward)
Go back to the previous track	<b>◀◀</b> (backward)*
Locate a point while listening to the sound	<b>►  </b> (forward) or <b>◀◀</b> (backward) while playing and hold it until you find the point.
Locate a point while observing the display	<b>►  </b> (forward) or <b>◀◀</b> (backward) in pause and hold it until you find the point.
Go back to the previous menu	<b>MENU</b>
Select a menu item or a track for playback	<b>↑</b> (up)/ <b>↓</b> (down)**
Execute the selected menu or begin playback	<b>ENTER</b>
Change to the repeat mode	<b>MODE**</b>
Change to the shuffle mode	Press and hold <b>MODE**</b>

\* During playback, this operation goes back to the beginning of the current track. To go back to the previous track, press twice.

\*\*These operations are available only when using the supplied remote commander.

### Notes

- When placing or removing the iPod, hold the iPod at the same angle as that of the connector on this unit, and do not twist or bend the iPod as connector damage may result.
- Do not carry the unit with an iPod set on the connector. Doing so may cause a malfunction.
- When placing or removing the iPod, hold the Docking Tray securely with one hand and take care not to press the controls of the iPod by mistake.
- Before disconnecting the iPod, pause playback.

### To use the unit as a battery charger

You can use the unit as a battery charger. Charging begins when the iPod is connected to the unit. Charging status appears in the display of iPod. For details, see the user's guide of your iPod.

### On copyrights

iPhone, iPod, iPod classic, iPod nano, and iPod touch are trademarks of Apple Inc., registered in the U.S. and other countries. "Made for iPod," and "Made for iPhone" mean that an electronic accessory has been designed to connect specifically to iPod or iPhone, respectively, and has been certified by the developer to meet Apple performance standards. Apple is not responsible for the operation of this device or its compliance with safety and regulatory standards. Please note that the use of this accessory with iPod or iPhone may affect wireless performance.

## Setting the alarm

This unit is equipped with 3 alarm modes—iPod, radio and buzzer. Before setting the alarm, make sure to set the clock (see "Setting the clock for the first time").

### To set the alarm

- Press and hold **ALARM SET A** or **B**. "Alarm-A Setting" or "Alarm-B Setting" appears and the hour flashes in the display.
- Press **ALARM TIME SET +** or **-** repeatedly until the desired hour appears. To cycle the hour rapidly, press and hold **ALARM TIME SET +** or **-**.
- Press **ALARM SET A** or **B**. The minute flashes.
- Repeat step 2 to set the minute.
- Press **ALARM SET A** or **B**. The days of the week flash.
- Repeat step 2 to set the days of the week. You can select the day from the following three options:  
EVERYDAY: MON TUE WED THU FRI SAT SUN  
WEEKDAY: MON TUE WED THU FRI  
WEEKEND: SAT SUN
- Press **ALARM SET A** or **B**. The alarm mode setting is entered.
- Press **ALARM TIME SET +** or **-** repeatedly until the desired alarm mode flashes. You can choose one of 8 settings: "iPod," "DAB1," "DAB2," "DAB--," "FM1," "FM2," "FM--" or "BUZZER." "DAB--" and "FM--" are the last station received. Set the alarm mode as follows:  
- iPod: see **[A]** Setting the iPod alarm."  
- DAB1, DAB2, DAB--, FM1, FM2 or FM--: see **[B]** Setting the radio alarm."  
- BUZZER: see **[C]** Setting the buzzer alarm."

### **[A]** Setting the alarm for iPod

- Perform steps 1 to 8 in "To set the alarm."
- Press **ALARM SET A** or **B** to select alarm mode for "iPod." "ALARM VOLUME:" and volume number flash in the display.
- Press **ALARM TIME SET +** or **-** to adjust the volume.
- Press **ALARM SET A** or **B**. The setting is entered.
- If "A" or "B" does not appear in the display, press **ALARM SET A** or **B** again. The iPod will sound at the set time.

### When using an iPod touch/iPhone

- To wake up to music stored in an iPod touch/iPhone, connect the iPod touch/iPhone to the unit first, follow the steps above to set alarm time, and then select the music function.
- Even if the alarm setting for iPod is complete, if you turn the iPod touch/iPhone power off before inserting the iPod touch/iPhone into the unit, the alarm for iPod will not work.

### **[B]** Setting the radio alarm

- Perform steps 1 to 8 in "To set the alarm."
- Press **ALARM SET A** or **B** to select radio band ("DAB1," "DAB2," "DAB--," "FM1," "FM2" or "FM--").



Pre-set number

When you select "DAB--" or "FM--," then jump to the step 5.

- Press **ALARM TIME SET +** or **-** to select the desired preset number corresponding to the band.

Press **DISPLAY** to confirm the preset details: Frequency for FM and component label for DAB.

### Tips

- If the selected preset number is not set, "PRESET BLANK" flashes two times, and then "ALARM VOLUME:" and volume number flash in the display. Then jump to the step 5.
- If there is no last station, "NO LAST STATION" flashes two times, and then "ALARM VOLUME:" and volume number flash in the display. Then jump to the step 5.
- Press **ALARM SET A** or **B**. "ALARM VOLUME:" and volume number flash in the display.
- Press **ALARM TIME SET +** or **-** to adjust the volume.

### 6 Press ALARM SET A or B.

The setting is entered.

### 7 If "A" or "B" does not appear in the display, press ALARM SET A or B again.

The radio will turn on at the set time.

### Note

If the selected preset number is not set, or there is no last station, the alarm sound will be buzzer when alarm time is met. If you want to change the buzzer alarm, set preset station or tune radio station (see "Operating the radio").

### **[C]** Setting the buzzer alarm

- Perform steps 1 to 8 in "To set the alarm."
- Press **ALARM SET A** or **B** to select "BUZZER" alarm mode. The setting is entered.
- If "A" or "B" does not appear in the display, press **ALARM SET A** or **B** again. The buzzer will sound at the set time.

### Note

The volume cannot be set for the buzzer alarm.

### To confirm an alarm time setting

Press **ALARM TIME SET +** or **-**. The setting will be displayed for about 4 seconds.

### To change an alarm setting

Press and hold **ALARM TIME SET +** for at least 2 seconds to move the alarm time forwards. Press and hold **ALARM TIME SET -** for at least 2 seconds to move the alarm time back. When you release the button, the changed time will flash for about 2 seconds. To change the alarm time again, press **ALARM TIME SET +** or **-** within these 2 seconds, otherwise the setting change will be fixed as displayed.

### To doze for a few more minutes

Press **SNOOZE/DATE/SLEEP OFF (SNOOZE** on the remote). The sound turns off but will automatically come on again after about 10 minutes. You can change the snooze time by pressing **SNOOZE/DATE/SLEEP OFF (SNOOZE** on the remote) repeatedly within 4 seconds. The maximum length of the snooze time is 60 minutes. To stop the snooze timer, press **OFF/ALARM RESET (OFF** on the remote).

### To stop the alarm

Press **OFF/ALARM RESET (OFF** on the remote) to turn off the alarm. The alarm will sound again at the same time the next day.

### To deactivate the alarm

Press **ALARM ON/OFF A** or **B** to turn off the alarm A or B indicator from the display.

### To activate the alarm

Press **ALARM ON/OFF A** or **B** to turn on the alarm A or B indicator in the display.

### Notes

- With the alarm mode is set to iPod, when the alarm time met, if iPod is not attached to the unit, the alarm sound will be the buzzer.
- The alarm function works as usual on the first and last day of daylight saving time (summer time). As a result, if the Auto DST/summer time adjustment is set and the alarm is set at a time that overlaps when daylight saving time begins, the alarm sounds; if the alarm is set to a time that overlaps when daylight saving time ends, the alarm will sound twice.
- If the same alarm time is set for both alarm A and B, alarm A takes priority.
- If there is no operation while the alarm is occurring, the alarm will stop after about 60 minutes.

### Note on the alarm in the event of a power interruption

In the event of a power interruption, the buzzer alarm will last about 5 minutes if the battery is not weak.

However, certain functions will be affected as follows:

- The backlight will not light up.
- If the alarm mode is set to iPod or radio, it will change to buzzer automatically.
- If **OFF/ALARM RESET** is not pressed, the alarm will sound for about 5 minutes.
- If "CC" appears in the display, the alarm will not sound in the event of a power interruption. Replace the battery if "CC" appears.
- The snooze function cannot be set during a power interruption. If the snooze function has already been set and a power interruption occurs, the snooze function will not work.

- During a power interruption, each alarm will sound at the set time only once.

## Setting the sleep timer

You can fall asleep to music, etc., using the sleep timer. The unit stops playback or radio automatically after a preset duration.

- Press **SLEEP** while the unit is turned on. "SLEEP;" and the sleep time flash in the display.
- Press **SLEEP** to set the sleep timer duration. Each time you press **SLEEP**, the duration (in minutes) changes as follows:
 

90	→	60	→	30	→	15
↑ OFF ↓						

The display returns to clock mode for about 4 seconds after you have finished the duration setting and released **SLEEP**, and then the sleep timer starts. The unit plays for the duration you set, and then stops.

### To turn off the unit before the preset time

Press **SNOOZE/DATE/SLEEP OFF (SNOOZE** on the remote) or **OFF/ALARM RESET (OFF** on the remote).

### To change the sleep timer setting

You can press **SLEEP** repeatedly to select the desired sleep timer setting even after the sleep timer has been activated.

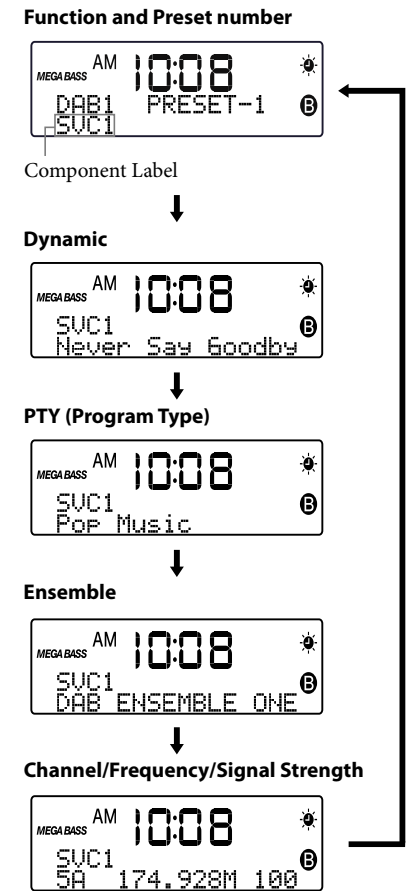
**To deactivate the sleep timer**  
Press **SLEEP** repeatedly to set the sleep timer to "OFF" in step 2.

## Other useful functions for DAB

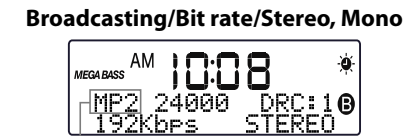
### Changing the display

To change the display mode, press **DISPLAY** during DAB reception. The selected display mode remains even if you turn the unit off and on again, or change the band. The display can be up to 16 characters long. A dynamic label can be up to 128 characters in length.

Each time you press **DISPLAY**, the display changes as follows\*:



\* When holding down **DISPLAY** for about 2 seconds or more, the display changes as follows:



DAB broadcasting: MP2  
DAB\* broadcasting: AAC  
The display will change to the previous display for about 4 seconds automatically if no operation is performed.

### Notes

- If there is no component label, "NO COMP LABEL" will be displayed.
- If there is no ensemble label, "NO ENS LABEL" will be displayed.
- If there is no program type, "NO PROGS TYPE" will be displayed.
- If there is no dynamic label, the lower line of the display is blank.

### Manual tune

This function allows you to tune and add the various DAB Band-III channels to your station list. This function can be used to assist the positioning of the aerial or the unit to obtain the optimum reception for a specific channel / frequency.

- Press **DAB/FM** repeatedly to select the DAB band.
- Press **MENU** and **SELECT •** or **•** to select "Manual Tune," and then press **ENTER**.
- Press **SELECT •** or **•** to select the desired DAB channel, and then press **ENTER**. The unit searches stations and lists up all the stations belonging to this channel. When pressing **DISPLAY**, the signal strength bars will go left and right showing the changing signal strength as you adjust the reception.
- Press **SELECT •** or **•** to select the desired service, then press **ENTER**.

### Note

If the desired channel selected in step 3 cannot be received, press **MENU** to select another channel.

**DRC Value (DYNAMIC RANGE CONTROL)**  
DRC can make quieter sounds easier to hear when the unit is used in a noisy environment. For DAB broadcasts with dynamic range compression, you can adjust the dynamic range by this unit.

- Press **DAB/FM** repeatedly to select the DAB band.
- Press **MENU** and **SELECT •** or **•** to select "DRC Value," and then press **ENTER**.
- Press **SELECT •** or **•** to select the DRC level. The DRC level changes as follows:
 

0	↔	1/2	↔	1 (default)
2				
- Press **ENTER**.

### Notes

- DRC is effective only in dynamic range compression broadcasts.
- When you adjust the DRC level, volume can be heard more loudly.

### Autoscan

These functions allow you to automatically scan and create a list of receivable DAB broadcasts.

- Press **DAB/FM** repeatedly to select the DAB band.
- Press **MENU** and **SELECT •** or **•** to select "Auto Scan," and then press **ENTER**.
- Press **SELECT •** or **•** to select "Yes," and then press **ENTER**. "Scanning..." appears in the display. Autoscan takes about 30 - 90 seconds. When finished, the unit creates a list in alphabetical order.

### Note

When Autoscan is performed, the existing list will be updated and the preset services will be cleared. In this case, preset your favourite services again.

### Trim stations

You can delete the stations that are not currently being received.

- Press **DAB/FM** repeatedly to select the DAB band.
- Press **MENU** and **SELECT •** or **•** to select "Prune," and then press **ENTER**.

When finished, "FINISH!" appears for about 1 second, then changes to the current station automatically.

### Confirm service list information

- Press **DAB/FM** repeatedly to select the DAB band.
- Press **MENU** and **SELECT •** or **•** to select "Servlist Info," and then press **ENTER**.
- Press **SELECT •** or **•** to select "Ens" or "Serv" or "Comp" to confirm the amount of the ensemble, service or component.

### Sync time now

You can synchronize time from DAB broadcasts.

- Press **DAB/FM** repeatedly to select the DAB band.
- Press **MENU** and **SELECT •** or **•** to select "Sync Time Now," and then press **ENTER**. When finished, "FINISH!" appears for about 2 seconds.

### Note

If no DAB broadcast can be received, "DAB TIME INVALID" appears for about 2 seconds in the display. In this case, adjust the positioning of the aerial or the unit to obtain the optimum reception.

### Select Station

Another service can be selected while listening to a broadcast.

- Press **MENU** and **SELECT •** or **•** to select "Select Station," and then press **ENTER**.
- Press **SELECT •** or **•** to select a desired service, and then press **ENTER**.

## PTY (Programme Type)

This function indicates services in programme type, such as NEWS, SPORTS of the PTY list, transmitted in a DAB broadcast.

If the received service or station does not transmit the programme type, "NO PTY Data" appears.

Programme type	Display
Undefined	None
News	News
Current Affairs	Current Affairs
Information	Information
Sport	Sport
Education	Education
Drama	Drama
Culture	Cultures
Science	Science
Varied	Varied Speech
Pop Music	Pop Music
Rock Music	Rock Music
Easy Listening Music	Easy Listening
Light Classical	Light Classics M
Serious Classical	Serious Classics
Other Music	Other Music
Weather	Weather & Metr
Finance	Finance
Children's programmes	Children's Progs
Social Affairs	Social Affairs
Religion	Religion
Phone In	Phone In
Travel	Travel & Touring
Leisure	Leisure & Hobby
Jazz Music	Jazz Music
Country Music	Country Music
Nation Music	Nation Music
Oldies Music	Oldies Music
Folk Music	Folk Music
Documentary	Documentary

## Other useful functions

### To obtain the MEGA Xpand effect

Press **MEGA Xpand**. "MEGA Xpand" appears in the display. The effect expands the sound field. To return to normal sound, press the button again.

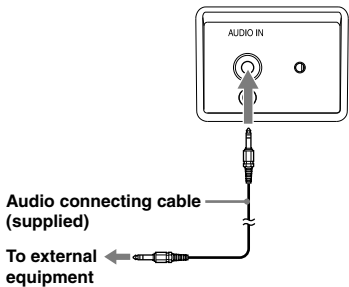
### To reinforce the bass sound

Press **MEGA BASS**. "MEGA BASS" appears in the display. The effect expands the bass content of the sound. To return to normal sound, press the button again.

## Connecting external equipment

### To listen to sound

- Connect the **AUDIO IN** jack on the back of the unit to the line out jack or headphone jack of the external equipment using the supplied audio connecting cable.



- Press **AUDIO IN** to display "AUDIO IN."
- Play the equipment connected to the **AUDIO IN** jack.
- Adjust the volume using **VOLUME +** or **- (VOL +** or **-** on the remote).

### To return to the radio

Press **DAB/FM**.

### To return to the iPod

Press **iPod & iPhone ►||**.

### To stop listening

Press **OFF** and stop playback on the connected unit.

### Notes

- The **MENU** cannot be operated while Audio in is used.
- Refer also to the connected equipment's manual.
- The supplied audio connecting cable may not be used with some external equipment. In this case, use a cord suitable for the external equipment you are using.
- When you listen to the radio with external equipment connected, turn off the connected equipment to prevent noise. If noise occurs, even when the equipment is turned off, disconnect and place the external equipment away from the unit.